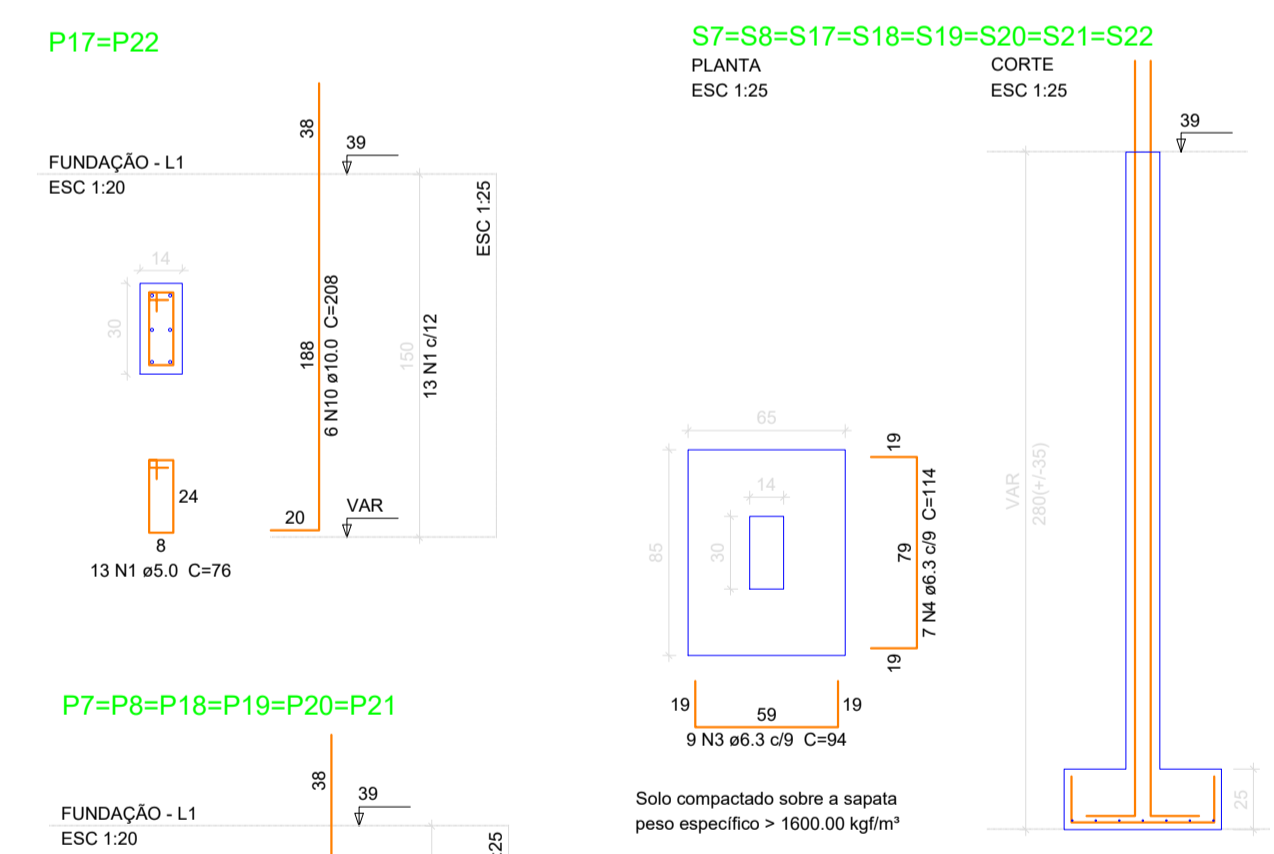


EXISTENTE
 À CONSTRUIR

Planta de locação escala 1:50

Nome	Seção (cm)	X (cm)	Y (cm)	Pilar		Fundação									
				Carga Máx. (tf)	Carga Min. (tf)	Mx (kgf.m)	My (kgf.m)	Fx (tf)	Fy (tf)	Lado B (cm)	Lado H (cm)	h0 / ha (cm)	h1 / hb (cm)	df (cm)	
P1	14x30	10.00	-18.00	5.6	5.0	900	200	0.3	1.1	100	115			25	150
P2	14x30	397.50	-10.00	5.2	4.9	400	300	0.3	0.1	100	115			25	150
P3	14x30	802.00	-10.00	8.8	7.8	1100	100	0.2	1.8	100	115			25	150
P4	14x30	1138.00	-10.00	8.8	7.9	1100	100	0.2	1.8	100	115			25	150
P5	14x30	1545.00	-10.00	5.2	4.9	400	300	0.3	0.1	100	115			25	150
P6	14x30	1938.00	-18.00	5.7	4.9	1000	200	0.3	1.2	100	115			25	150
P7	14x30	2152.00	-470.00	4.0	2.1	400	600	1.0	0.4	65	85			25	150
P8	14x30	2743.00	-470.00	4.0	2.1	400	600	1.0	0.4	65	85			25	150
P9	14x30	10.00	-587.00	8.2	4.0	1200	200	0.3	1.6	100	115			25	150
P10	14x30	395.00	-595.00	3.9	3.6	300	200	0.2	0.1	100	115			25	150
P11	14x30	802.00	-595.00	5.5	4.5	1100	300	0.5	1.6	100	115			25	150
P12	14x30	1138.00	-595.00	5.5	4.5	1100	300	0.5	1.6	100	115			25	150
P13	14x30	1545.00	-595.00	3.9	3.6	400	200	0.2	0.1	100	115			25	150
P14	14x30	1930.00	-587.00	7.3	4.0	1400	200	0.3	1.7	100	115			25	150
P15	14x30														
P16	14x30														
P17	14x30	10.00	-762.50	4.7	0.1	800	100	0.2	0.7	65	85			25	150
P18	14x30	395.00	-770.00	3.6	3.4	800	200	0.2	0.2	65	85			25	150
P19	14x30	810.00	-770.00	3.2	2.9	1500	200	0.2	0.3	65	85			25	150
P20	14x30	1130.00	-770.00	3.2	2.9	1500	300	0.3	0.3	65	85			25	150
P21	14x30	1545.00	-770.00	3.5	3.3	800	200	0.2	0.2	65	85			25	150
P22	14x30	1922.00	-770.00	3.9	0.1	300	200	0.3	0.4	65	85			25	150



Relação do aço

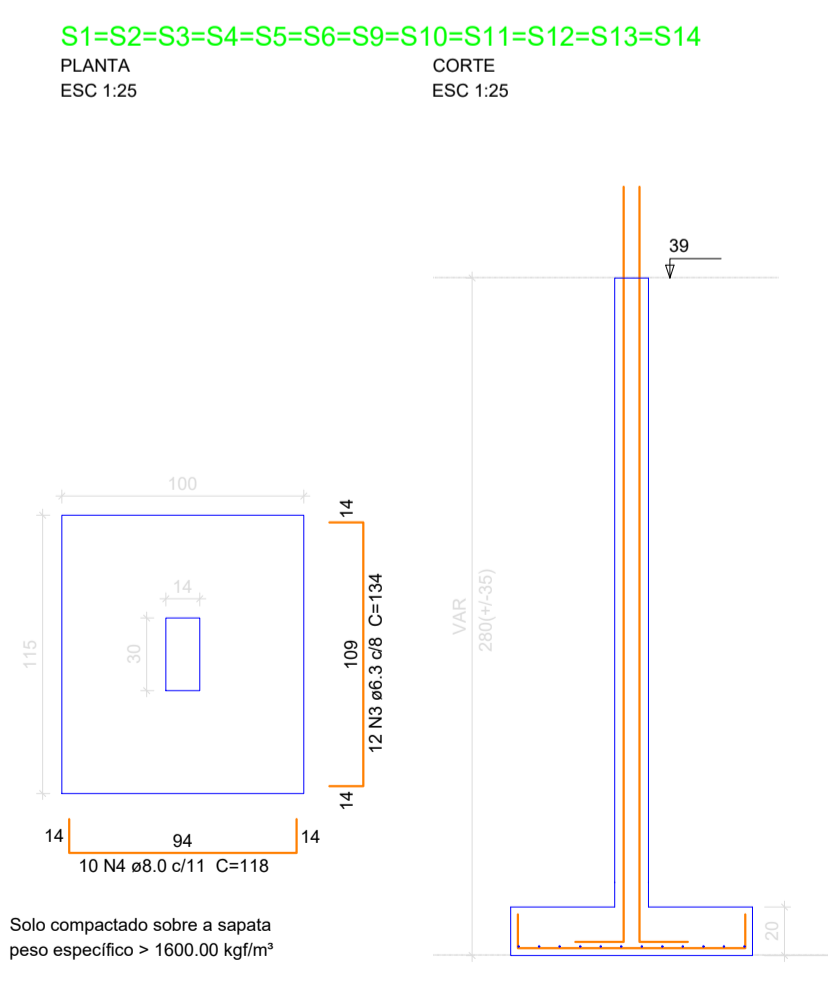
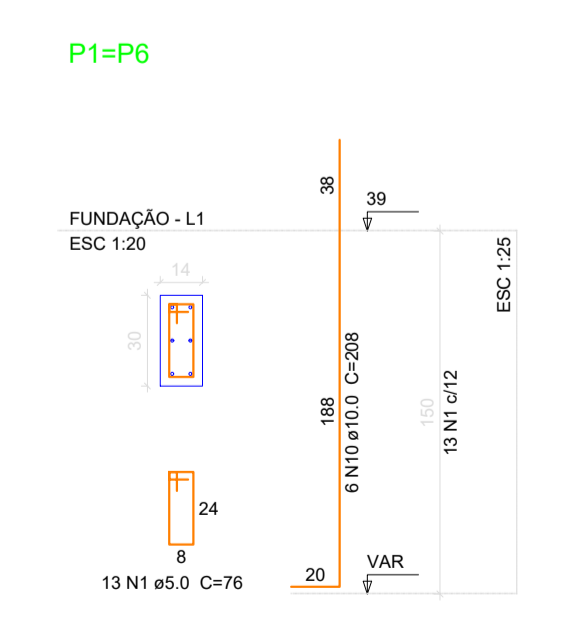
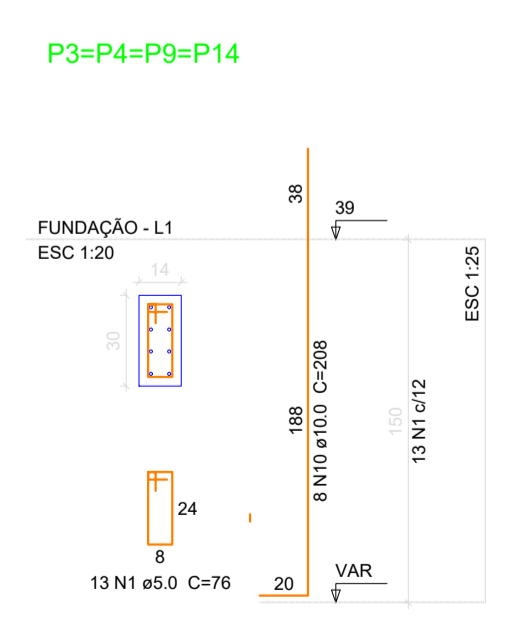
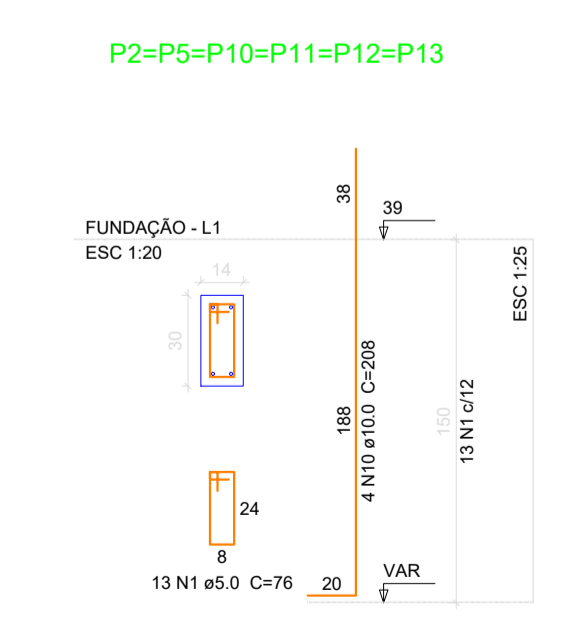
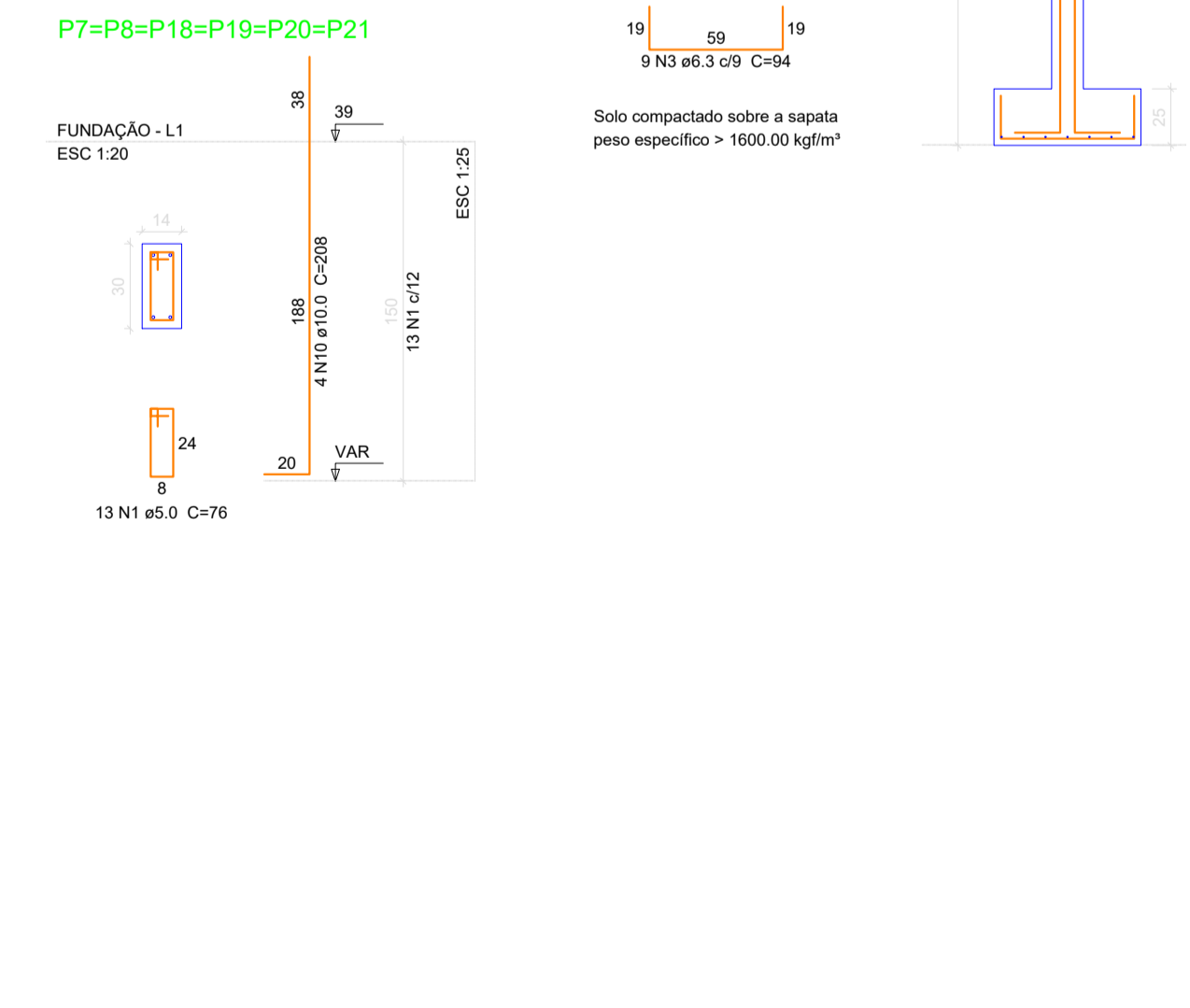
S7=S8=S17=S18=S19=S20=S21=S22

AÇO	N	DIAM (mm)	QUANT (Barra)	UNIT (cm)	C.TOTAL (cm)
CA60	1	5.0	104	76	7904
CA50	3	6.3	72	94	6768
	4	6.3	56	114	6384
	10	10.0	108	208	19968

Resumo do aço

AÇO	DIAM (mm)	C.TOTAL (m)	BARRA + 10 %
CA50	6.3	131.52	11
	10.0	199.68	17
CA60	5.0	79.04	7

Volume de concreto (C-25) = 1,54 m³
 Área de forma = 8,80 m²



Relação do aço

S1=S2=S3=S4=S5=S6=S9=S10=S11=S12=S13=S14

AÇO	N	DIAM (mm)	QUANT (Barra)	UNIT (cm)	C.TOTAL (cm)
CA60	1	5.0	169	76	12844
CA50	3	6.3	156	134	20904
	4	8.0	130	118	15340
	10	10.0	234	208	48672

Resumo do aço

AÇO	DIAM (mm)	C.TOTAL (m)	BARRA + 10 %
CA50	6.3	209.04	18
	8.0	153.4	13
	10.0	486.72	41
CA60	5.0	128.44	11

Volume de concreto (C-25) = 4,43 m³
 Área de forma = 14,3 m²

PREF. MUN. DE SÃO CRISTOVÃO DO SUL

PROJETO AMPLIAÇÃO NÚCLEO EDUCACIONAL MEU POSTINHO

REFERÊNCIA: ESTRUTURAL PLANTA LOCAÇÃO, DETALHES SAPATAS

PRONCHA: ES/01

PROPRIETÁRIO: MUNICÍPIO DE SÃO CRISTOVÃO DO SUL

RESPONSÁVEL TÉCNICO: ENG. CIRO FONTANA SURDI

ASSINATURA: _____

PREFEITURA: _____

DESENHISTA: _____

AMPLIAÇÃO E REFORMA: ESCALA INDICADA

225,61M²

REV 01 03/01/2021